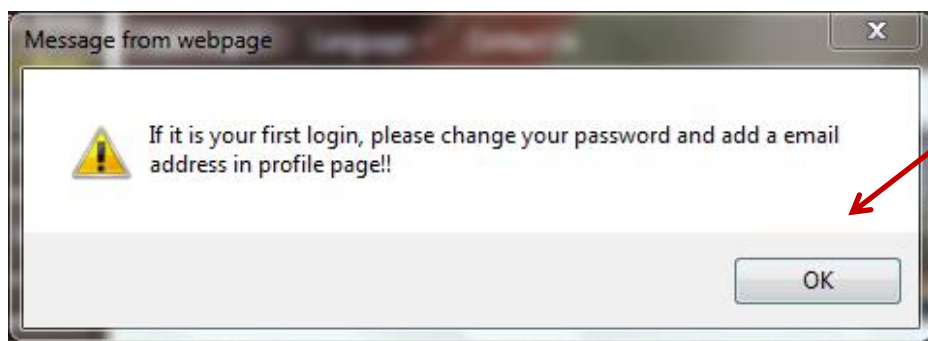
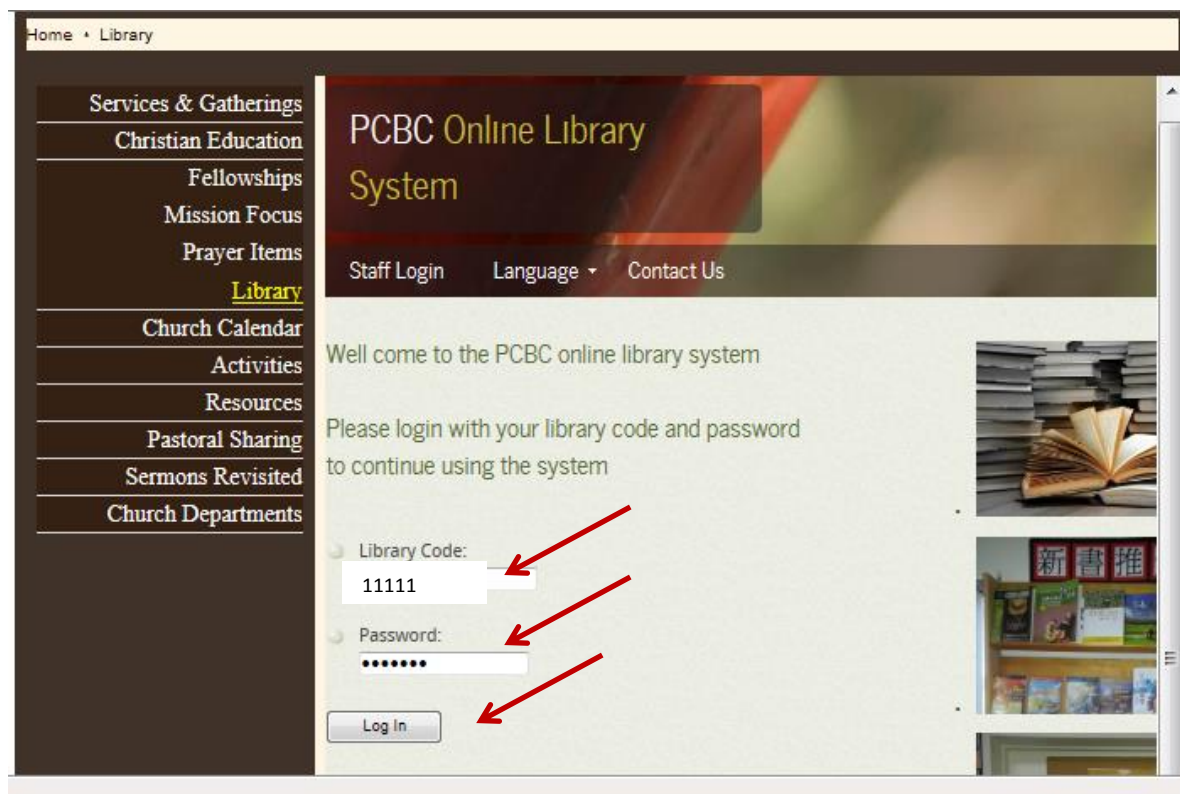


## PCBC Online Library Member user manual:

**Link:** <http://www.pcbc.org.nz> → Click English → Select **Library**



1. Type your library card number on Library Code field. (5 digits)
2. If it is your first time to login, type 1234567 on the password field, and click Login then the message box (2.1) will be shown and click OK.



(2.1) Message box

3. Once the login is successful, the following page will be shown automatically.

**PCBC Online Library System**

Home New Arrival Items ▾ Shelves Profile Contact Us

### Rules

(Remarks 1)

1. Library open hours:

- Saturday half an hour before service (library will be closed if there is the week of home group)
- Sunday after service for half an hour (library will be closed if there is quarterly meeting or annual meeting)

2. Library card must be presented for issuing and returning of books

3. Borrowing limits: (no renewal allowed if the book or AV item is reserved by someone else)

- 3 books for 2 weeks, renew once only
- CD / VCD / DVD 2 sets or 2pcs for 2 weeks

4. \$1.00 donation will be collected for each week of overdue. The money will be used for new books, audio or video

Welcome !  
Your library code is  
**11111**  
[Change password](#) [Logout](#)

(You can logout or change Language at any time!)

Language  
☐ English  
☐ Chinese

More Useful Links

- [Overdue item](#)
- [Another Link](#)
- [And Another](#)
- [Last One](#)

(Remarks 2)

**\*Remarks 1:** If you want to change your password, click Change password to change your password. Go to Step 4 to review the process.

**\*Remarks 2:** You can check your overdue item by clicking **Overdue item**. Or go to Profile→ Click View List

教育/課程  
團契  
差傳  
祈禱網頁  
圖書館  
教會行事曆  
活動  
資源  
牧者心聲  
講道重溫  
教會部門

**PCBC Online Library System**

Home New Arrival Items ▾ Shelves Profile Contact Us

### Overdue History

Welcome !  
Your library code is  
**11111**  
[Change password](#) [Logout](#)

Language  
☐ English  
☐ Chinese

Items You Have not returned

Returned?: Not return yet-

Bar Code: I02.43

Borrow Date: 2013-09-14

Due Date: 2013-09-28

4. Personal Profile/View Outstanding Items: Change Password and add email address then click update.

Home - Library

Services & Gatherings  
Christian Education  
Fellowships  
Mission Focus  
Prayer Items  
**Library**  
Church Calendar  
Activities  
Resources  
Pastoral Sharing  
Sermons Revisited  
Church Departments

PCBC Online Library System

Home New Arrival Items Shelves Profile Contact Us

Personal Profile

Library Code: 11111

New Password:

Confirm Password:

Email address:

Update

View Outstanding Items List

View List

Welcome !  
Your library code is  
11111  
Change password Logout

Language  
English  
Chinese

Links  
First Link  
Another Link  
And Another  
Last One

5. Overdue History: **Profile** →, click View List.

教育/課程  
團契  
差傳  
祈禱網頁  
**圖書館**  
教會行事曆  
活動  
資源  
牧者心聲  
講道重溫  
教會部門

PCBC Online Library System

Home New Arrival Items Shelves Profile Contact Us

Overdue History

Items You Have not returned

Returned?: Not return yet~

Bar Code: I02.43

Borrow Date: 2013-09-14

Due Date: 2013-09-28

Welcome !  
Your library code is  
11111  
Change password Logout

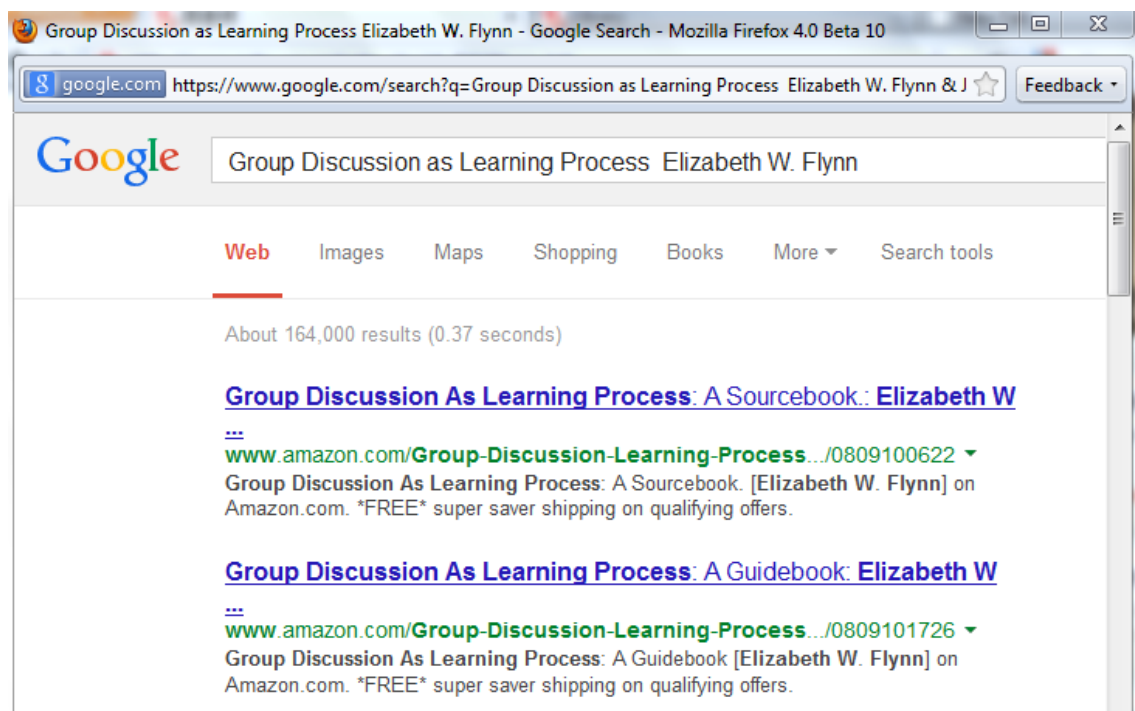
Language  
English  
Chinese



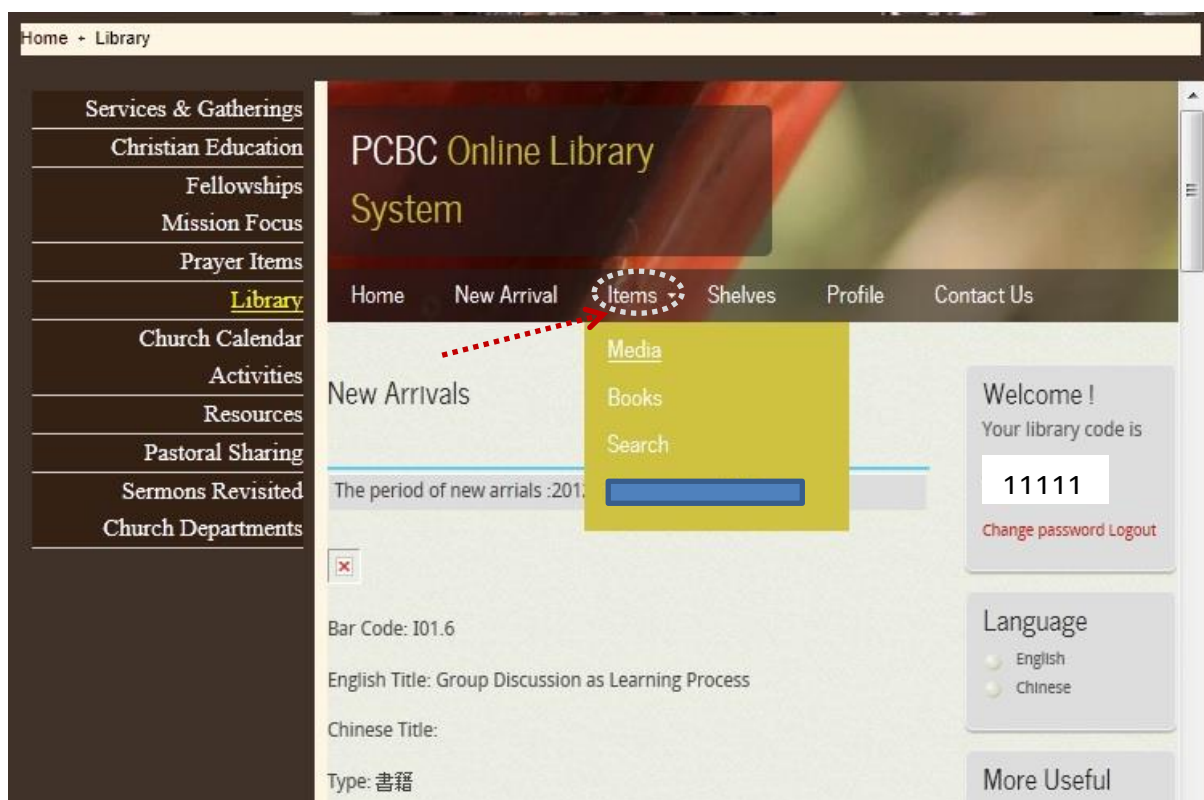
6. New Arrival: Click New Arrival. If you want to review the item's details, click Info on Web information tab.



#### 6.1 The result of Google search will be shown



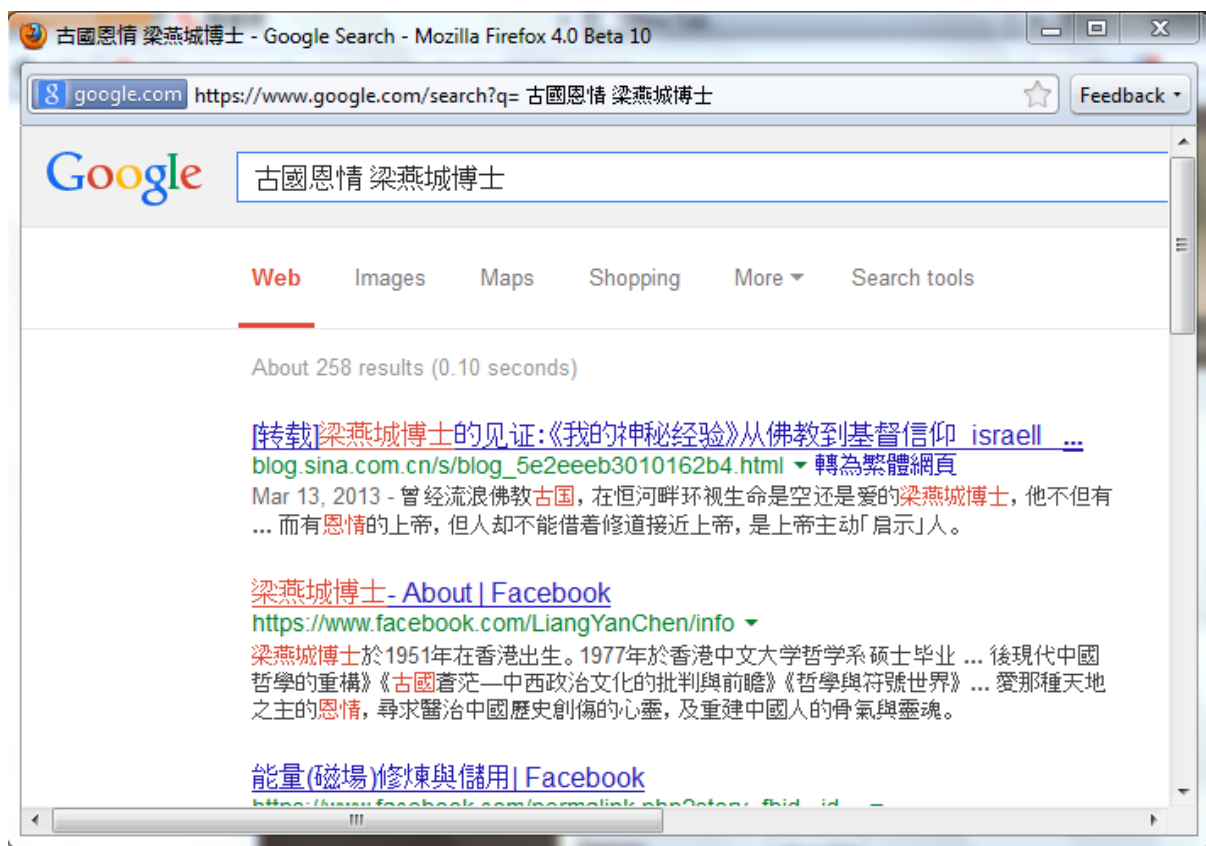
7. Items: click Media or Books or Search



7.1 Media: If you want to review the item's details, click Info on Web.



7.1.1: The result of Google search will be shown.



7.2 Book: Refer to Step 7.1 but select Books. If you want to review the item's details, click Info on Web.



崇拜及聚會	Bar Code:	A01.12.1
教育/課程	Title:	當代福音 新約全書意譯本
團契	Type:	書籍
差傳	Author:	
祈禱網頁	Language:	繁體
<b>圖書館</b>	Option	Info on Web ←
教會行事曆		
活動		
資源		

7.2.2 The result of Google search will be shown.



7.3 Search: Type either Title or Author Name or Click Category then click Search button.

Home + 圖書館	<h2>PCBC Online Library System</h2> <p>Home New Arrival Items Shelves Profile Contact Us</p>	
崇拜及聚會	Title:	<input type="text"/>
教育/課程	Author Name:	施維均 ←
團契	Category:	Choose Category ▼
差傳	Search	←
祈禱網頁	<p>Welcome !</p> <p>Your library code is</p> <p><b>11111</b></p> <p>Change password Logout</p>	
<b>圖書館</b>		
教會行事曆		
活動		
資源		
牧者心聲		
講道重溫		
教會部門		



OR

Select Category then click Search.

7.3.1: The list will be shown.

7.3.2 If you want to review the item's details, click Info on Web.





8. Shelves: The Purpose of the Shelves is to show your previous borrowed items.

